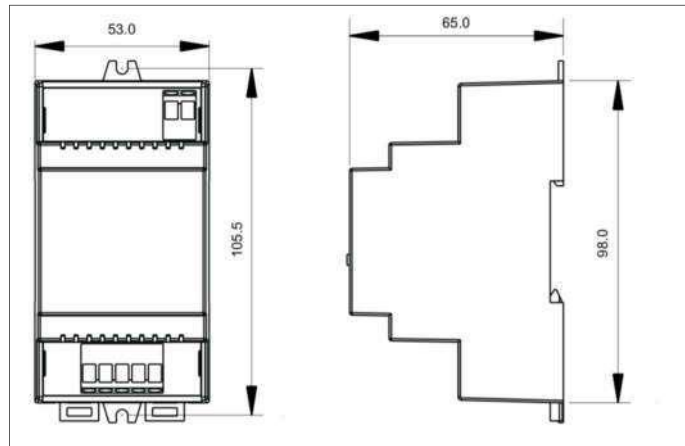


DALI bus power supply.



Body construction	Plastic – Din rail mount – or surface mount
Ports	Push in connector blocks – with press release
Supply in	230V AC 50Hz
Typical DALI network features	<p>250mA 16V .</p> <p>The 250mA needs to be factored in when adding the consumption of all the devices attached to the DALI bus.</p> <p>Volt drop needs to be factored in – maximum permissible volt drop is 2V – (so 14V DC)</p> <p>No more than 16 DALI groups allowed.</p> <p>No more than 16 DALI scenes allowed.</p> <p>Booster devices need to be added to the bus if these parameters are exceeded.</p>
IP rating	IP20